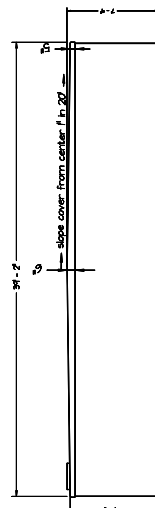
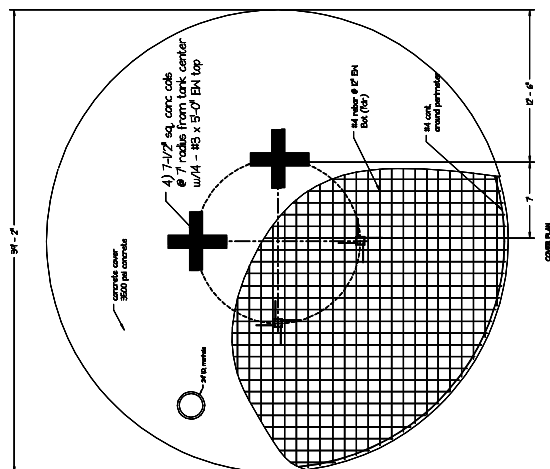
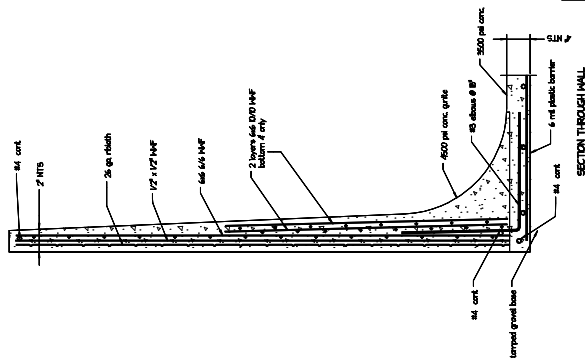


SECTION
not to scale



NOTES:
1. ALL CONCRETE SHALL BE 3500 PSI WITH 4% STEEL FIBER.
2. ALL REINFORCEMENT SHALL BE EPOXY COATED #4 OR #3 BARS.
3. ALL REINFORCEMENT SHALL BE PLACED WITH 2" COVER.
4. ALL REINFORCEMENT SHALL BE PLACED WITH 2" COVER.

60,000 GALLON FERROCEMENT
WATER TANK
PEPERED, HANNA
MAY 2002